



Reliable Community Care provide extensive services to our participant at their best recommendation and requirement. We have broad range of services that are needed by the participant in their day to day life. We are committed to provide following services to our participant depending on their interest, request and need.



About Reliable community care

Reliable Community Care recognises its moral and legal responsibility to provide high quality and safe supports and services to NDIS participants in accordance with the NDIS Code of Conduct and the NDIS Practice Standards as follows

- rights and responsibility for participants,
- governance and operational management,
- the provision of supports, and
- the support provision environment.
- choice and control of the participants.

We Ensure

- At the direction of the participant, the culture, diversity, values and beliefs of that participant are identified and sensitively responded to.
- Each participant’s right to practice their culture, values and beliefs while accessing supports is supported
- Consistent processes and practices are in place that respects and protect the personal privacy and dignity of each participant.
- Each participant is advised of confidentiality policies using the language, mode of communication and terms that the participant is most likely to understand.
- Each participant understands and agrees to what personal information will be collected and the reason, including recorded material in audio and/or visual format.

Community Participation

We aim to keep you living independently, safely and well in your community access. We are able to connect our participants to the services they need to actively participate in the community. Including both social and civic activities, we are able to support participants during these activities.

Household Tasks

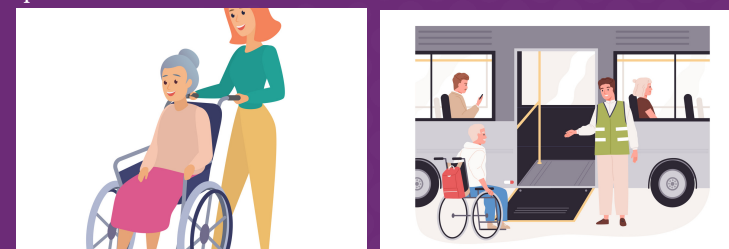
Meal preparation, house maintenance, general cleaning, laundry and gardening care are tasks that can be challenging for our participants to undertake. We will be providing assistance for domestic duties in your home and maintain punctuality your daily routine.

Assist-Travel/Transport

We assist you develop skills for travel and use public transport independently. We support our participants with their personal travel arrangements to continue their community participation without disruption.

Assist-Personal Activites

RCC Participants are able to maintain personal care, self-care, in the safe environment. Your personal activities ensure that where you need to be maintained. We are able to provide this personal care inside or outside of the home.



REGISTERED NDIS PROVIDER

Individual values and beliefs

Reliable Community Care is committed to implementing a system to ensure each participant will receive quality services and supports that respect their culture, diversity, values and beliefs.



Privacy and Dignity

Reliable Community Care is committed to implementing a system to ensure each participant will receive quality services and supports that respect and protect their dignity and right to privacy.

Contact Us

14 Railway Crescent, Broadmeadows, VIC 3047

info@reliablecommunitycare.net.au

0432639968 | 0403702595

www.reliablecommunitycare.net.au

OUR SERVICES

Specialized Support and Employment

We have been providing supports in employment for participants who need extra help to achieve their employment goals. We help you to explore your abilities assisting you in upskills and find volunteers or paid work.



Group/Centre Activities

Group centre activities are an enjoyable way our participants fulfilling experiences and participate in community access. We are able to connect our participants to the services they need to actively participate in both social and civic activities in the community.



Innovative Community Participation

We assist you up skills and develop your independent. Our participants have been learning the use of technology and stay connected with the love one. Engaging with sharing past and avoiding isolation we are able to support participants during these activities.

OUR SERVICES

Coordination of Supports

Support coordination is a capacity building support that focuses on supporting participants and assisting them in achieving the goals set out in their NDIS plan, strengthening and enhancing their capacity.

Our focus as a **Support Coordinator** is to complement our participant's life and help put their NDIS plan into action by:

- Supporting participants to understand their NDIS plan
- Strengthening and enhancing participants capacity and resilience
- Establishing supports including making referrals to service providers and linking to mainstream and/or community services
- Managing those resources effectively to get the best outcome
- Working along with participants informal support like family, friends, local networking and Formal supports therapists, communities and mainstream supports meeting the goals in the participants NDIS plan
- Monitoring participants progress and any outcomes
- Providing the NDIA with reports of specific goals, outcomes, and success indicators within the agreed reporting period.

OUR SERVICES

Psychosocial Recovery Coach

Psychosocial Recovery Coaching (PRC) combines the principles of recovery-oriented practice and is focused on building meaning in people's lives and resilience.

- Implement a recovery plan to help you become more independent
- Help you get the most from your NDIS Plan
- Assist with coordination of NDIS supports
- Provide coaching to increase skills and capacity such as motivation, strengths, resilience and decision-making
- Connect you with mainstream supports.

Our role is then to work with your informal supports, formal supports and other key stakeholders to connect you with all the necessary support to ensure a smooth recovery journey. We work with you to create a clear plan of action to help you achieve your goals. Then provide expertise, encouragement and support for you to make positive changes in your life.



0432639968

Call Us Now

www.reliablecommunitycare.net.au